



MONDAY DECEMBER 9TH | ISSUE 37

NONSUCH NEWS

Our weekly newsletter for the school community

WHAT'S INSIDE THIS ISSUE:

- Messages from Mrs Williamson-Jones
- Updates from Ms Osborne
- Safeguarding and wellbeing
- Community notices
- School news
- Upcoming dates for your diary

MESSAGES FROM MRS WILLIAMSON-JONES



Dear students, parents, and carers,

It has been another exceptionally busy and productive week at Nonsuch. Last week saw the start of Year 11 mock examinations - an important step in their academic journey. Alongside this, our Year 7 students enjoyed an inspiring science trip to Herstmonceux, while our Year 13 Geographers attended an insightful conference in London. We also hosted the Year 8 Parent Teacher Consultations, and I had the pleasure of judging the House Talent Show, which highlighted the impressive creativity and skill of our students.

On Monday, as part of our school review process, we held a parent forum, where a number of parents shared their perspectives on our curriculum and approaches to teaching and learning. This was an incredibly valuable exercise, providing us with constructive feedback and meaningful insights. These contributions are integral to our ongoing efforts to refine and enhance the educational experience at Nonsuch. I will be writing to all parents shortly with a summary of the feedback received, and we look forward to holding another parent forum next term. I strongly encourage you to participate, as your input is highly valued.

As we approach the final weeks of term, I look forward to welcoming Year 9 parents to the forthcoming Information Evening, which will focus on GCSE options. Additionally, we are all eagerly anticipating the festive highlight of the term—the Christmas Concert taking place this week.

Thank you for your continued support. Wishing you all a pleasant and productive week.

Warm regards,
Mrs Williamson-Jones

UPDATES FROM MS OSBORNE

Attendance

Attending school every day can help your child to achieve their aspirations, and the aspirations you have for them. School attendance is also important for giving them the enrichment opportunities that can help support their social and mental wellbeing.

The research on the link between attendance and attainment is clear; the students with the highest attendance throughout their time in school gain the best GCSE and A Level results.

We appreciate that it can be difficult to know whether your child is too ill to attend school. However, NHS guidance is clear that it is fine to send them in with a minor cough or common cold, provided they don't have a temperature.

We aim for all our students to have an attendance rate of 95% or above. You can monitor your child's attendance data through the Schoolgateway app and ensure that it remains at this rate. If there is anything that we may be concerned about, your child's form tutor, Head of Year, or I will contact you.

New guidance on attendance

In February, the Government published new guidance for attendance which became statutory in August. These changes reflect amendments to the law and are part of the Government's drive to improve attendance at school. Details are [here](#), along with links to wider guidance on supporting your child's attendance. The full guidance is [here](#).

A reminder that the Government has an [attendance hub](#) which can help parents make informed decisions about attendance. The Government also provides parents with guidance around illness and attendance at school. This [guidance](#) helps parents make informed decisions about their child's health and attendance.

All in %	Y7	Y8	Y9	Y10	Y11	Y12	Y13	All
Attendance	99.00	97.24	96.52	95.20	98.76	95.57	92.79	96.47
Authorised	0.90	2.67	2.71	4.46	1.15	3.16	6.51	3.06
Unauthorised	0.05	0.10	0.76	0.34	0.09	1.13	0.47	0.41
Persistent absence >=10%	11	20	34	39	10	33	51	198

02/12/24 - 06/12/24

Yearly Attendance	Yearly Days Missed	Yearly Learning Hours Missed	Learning Hours Missed Over 5 Years
100%	0	0	0
97%	6	30	150
95%	10	50	250
90%	20	100	500
80%	40	200	1000
50%	100	500	2500

ClassCharts for parents

A reminder that our presentation on ClassCharts for parents can be found on the [parent portal](#) of our school website.

SAFEGUARDING AND WELLBEING

Safeguarding email

If you have any concerns or questions regarding safeguarding or child protection, please contact us at

safeguarding@nonsuchschool.org

We are here to ensure the safety and wellbeing of all individuals within our community, and we take any reports or enquiries seriously. Your email will be treated confidentially and promptly addressed by our dedicated safeguarding team.

Reporting absence

Please report absences via Schoolgateway.

Download the app [here](#).

First Aid

Please advise [First Aid](#) of any recently-diagnosed medical conditions/allergies.

SCHOOL NEWS

Kipekelion Fair - Year 9

Maria (Y9) writes: On November 27th, Year 9 had the pleasure of running the annual Kipekelion Fair, a highlight in the Nonsuch calendar. The fair is hosted yearly in order to raise money for one of our school-linked charities, [Friends of Kipekelion](#).

Another positive outcome of the fair is the life skills the girls learn in terms of business and marketing. I participated in a stall called "The Shot House", where we sold non-alcoholic shots, waffles and brownies. My contributions were greatest in the area of marketing; I helped design the posters with a peer as well as visiting each form group in attempt to advertise prior to the fair. On the day of the event, my peers and I learnt how to cope with high demands and introduce other creative methods of sale in order to boost earnings. The most enjoyable aspect of the fair, in my opinion, was introducing our notorious "Shot Challenge" for £1 in the last half an hour; it gave everyone who participated a good laugh as well as being very amusing to the stallholders!

The levels of enthusiasm were undeniably fantastic as well as the innovation of each stall. A big 'thank you' to the teachers who helped organise the event and to my form tutor, Ms Yard, who always emphasised the life lessons we could earn from this experience. I cannot wait to see what next year's Year 9 students will achieve but I am certain that it will impress us all.



SCHOOL NEWS

Upcoming PE fixtures

Date	Time	Sport	Opponent	Team	Location
09/12/24	15:30	Hockey	Sutton	U12AB	Nonsuch
10/12/24	15:30	Football	Glenthorne	U12 & U14	Nonsuch
11/12/24	11:00	Indoor Cricket	Borough	U13	Sutton
20/01/25	10:00	Gym	Borough	U13	Putney High
20/01/25	15:30	Indoor Athletics	Borough	Y7	Nonsuch
23/01/25	15:50	Netball	Wallington	SNR	Nonsuch
29/01/25	15:30	Netball	Downsend	U12AB & U13AB	Downsend
05/02/25	15:30	Netball	Wallington	U12ABCD	Nonsuch
11/02/25	15:00	Netball	Sutton High	U13AB	Nonsuch
12/02/25	15:30	Netball	Wallington	U13ABCD	Wallington

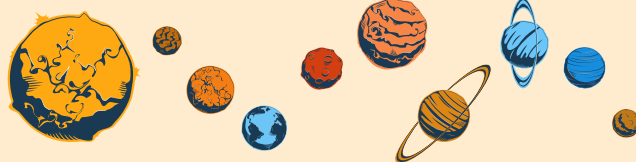
SCHOOL NEWS

Gymnastics - U15 and U19 squads in action

We had an U15 and U19 gym competition recently at St Catherine's school in Guildford, with both squads performing amazing routines in both floor and vault. It was great to have our squads put all of their training into competition. They more than held their own and we were very proud of them all ❤️. Well done girls!



Astronomy Challenge success - Years 10 and 11



Out of this world results were achieved by Nonsuch students who took part in the recent British Physics Olympiad Junior Astronomy Challenge.

Students sat two papers over two lunchtimes with EVERY participant awarded either a Gold or Silver Award. Our stellar performers are Akshara, Diya, Eva, Enakshi, Sahaana and Thaarani in Y11 and Siya, Daniella and Gayatri from Y10. We are really proud of you all.



Students' achievements

We love to hear about and celebrate our students' many and varied achievements outside of school. Please complete this [form](#) to let us know about these and we will try to publish as many of them as we can in future issues of the newsletter.

Student spotlight

Kaitlyn (Y9) writes: This Wednesday, I had the incredible opportunity to compete at the British Figure Skating Championships 2024 at the Ice Sheffield. I'm thrilled to share that I performed one of my best skates and placed third overall in my category—my biggest achievement so far. It was such an honour to compete alongside so many talented skaters from across the UK, and I'm truly grateful to have earned a spot on the podium. I'm excited to keep working hard, improving, and aiming to return to this competition next season.



House Christmas
DANCEATHON

COME TO THE HALL ON WED DECEMBER 11TH FOR THE HOUSE CHRISTMAS DANCEATHON!!

REGISTER WITH THE HOUSE OFFICIALS IN **THE HALL** AT **12:20**

MAIN HALL

WEDNESDAY	11	12:20
-----------	-----------	-------

BRING YOUR CHRISTMAS HATS OR DECORATIONS
GET THERE **EARLY** AS **SPACES ARE LIMITED!!**

UPCOMING DATES FOR YOUR DIARY

Week 1	Year 11 Mock exams & NEA
Monday 9th December	House Masterchef – Round 1 Year 9 Parent information Evening – 18.00 - Hall
Tuesday 10th December	Christmas Concert rehearsals Christmas Concert – 18.00 - Hall
Wednesday 11th December	PHSE CPD – Late start for students - 9.55 Christmas House Danceathon – 12.20 – Hall
Thursday 12th December	
Friday 13th December	
Week 2	Year 11 NEA
Monday 16th December	
Tuesday 17th December	Prize Giving – A-Level – 18.15-20.30
Wednesday 18th December	
Thursday 19th December	Early finish - 12.30 END OF TERM